

The background of the cover features a collage of official seals. At the top left is a partial view of a Sheriff's Office seal. Below it is the Great Seal of the State of Kansas, which is circular and contains a landscape with a sun, mountains, and a plow. At the bottom left is a partial view of the Johnson County seal, which is shield-shaped and contains a stylized 'J' and 'C'.

2022 Annual Report

JOHNSON COUNTY SHERIFF'S OFFICE

27747 W. 159th Street
New Century, Kansas 66031

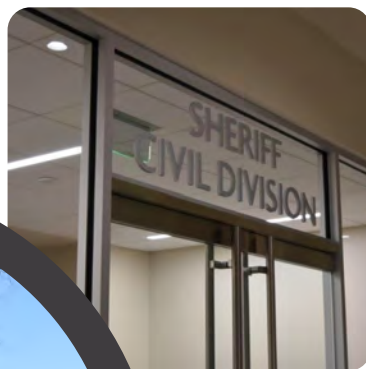
Civil/Collections

The Civil Division serves and executes all civil process requested for service by the Sheriff's Office in Johnson County. This includes a wide range of court documents including but not limited to: Summons and Complaints, Subpoenas, Small Claims, Garnishments, Evictions, Protection from Abuse Orders, and Protection from Stalking Orders. The Civil Division serves civil process by managing ten districts and providing deputies for evictions five days a week, as well as completing various patrol functions. The Division received a total of 39,373 documents for service as well as completed 2,203 evictions in 2022.

The Civil Division scheduled 140 residential property foreclosures and conducted 64 sales on the Courthouse steps. Those sales generated \$17,202,825.61 collected by the Sheriff's Office.

The Collections Unit is staffed with one deputy and one civilian support staff. They are responsible for enforcing all vehicle registration laws and investigating violations reported by the public or local law enforcement. They also investigate non-sufficient funds checks written to the Department of Motor Vehicles and investigate/collect delinquent Personal Property Tax as reported by the Johnson County Treasurer. In 2022, deputies collected \$138,520.78 in Registration Violations and \$13,289.85 in Non-sufficient Fund violations.

In 2022, \$199,597.00 was collected by the Civil and VREU Divisions for all in and out of state fees. The total revenue generated by the Sheriff's Civil and Collections Unit in 2022 was \$351,407.63.

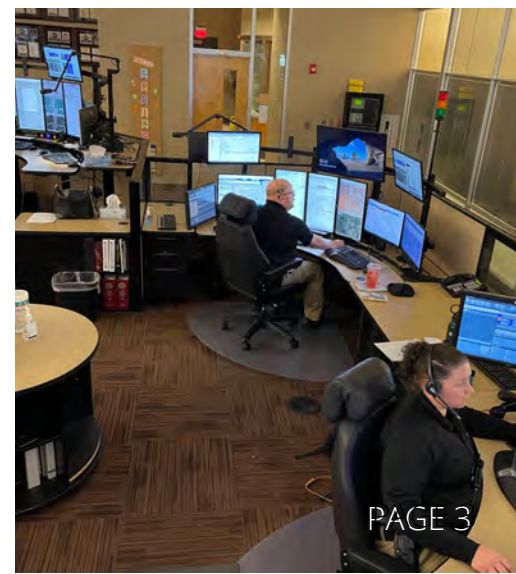


Communications

The Communications Division provides the highest quality of service to the citizens and law enforcement officers of Johnson County, with their welfare as our first priority.

We are the point of contact for emergency services (police, fire and ambulance) for 13 entities in Johnson County across 15 jurisdictional boundaries. Areas served include the unincorporated areas of Johnson County, the cities of DeSoto, Edgerton, Fairway, Gardner, Lake Quivira, Merriam, Olathe, Mission, Roeland Park, Spring Hill, Westwood, Olathe School District Police, as well as the Johnson County Park Police and local Kansas Department of Wildlife and Parks Wardens. In cases where fire or ambulance response is needed, we immediately relay the call to Johnson County Emergency Communications staff.

In 2022, the Communications Division received a total of 251,050 phone calls. 94% of our 81,252 – 911 calls were answered within 10 seconds or less. Communications deputies handled 292,498 events to include self-initiated activity as well as calls for service. Over the course of the year Communications sent or received over 2 million radio transmissions on primary radio channels.



Court Security

The Court Security Division provides security to the Courthouse and the Justice Annex Building. Deputies conduct entry screening at both the Courthouse and Justice Annex, searching for prohibited items to ensure the safety of all visitors to these buildings. In 2022, Court Security deputies screened more than 269,783 visitors between the Courthouse and Justice Annex.

Court Security also provides security inside the courtrooms for high-risk, high-profile, or possible volatile cases. In a typical year, this includes over 900 security requests. Again, with a reduction of in-person court proceedings due to the pandemic, the number of security requests was around 479 in 2022. In addition to providing security to the facilities, other law enforcement actions are taken. Court Security arrested 192 people on warrants in 2022 and completed 241 Court Commitments. Court Security also served civil papers both in the Courthouse and the Justice Annex.

2022 marked a return to more in-person cases, jury trials, and visitors to the Courthouse. There were also plans to build out 3 additional courtrooms to accommodate new judges. These additions will help serve the citizens of Johnson County in a more efficient way.



Crime Lab

The Johnson County Sheriff's Office Criminalistics Laboratory continues to provide a full complement of forensic services to our contributing agencies, and in doing so, continues to stay abreast of changes in technology. A new quality system, Qualtrax, was implemented to give the laboratory an all-in-one platform to improve the tracking of the laboratory's quality & compliance systems. Forensic services were rendered to 34 law enforcement agencies in 2022.

DISCIPLINE	CASES SUBMITTED	ITEMS SUBMITTED	CASES COMPLETED	ITEMS COMPLETED
BIOLOGY/DNA	1,372	5,931	1,011	4,909
BLOOD ALCOHOL	287	287	298	298
CONTROLLED SUBSTANCES	1,869	6,552	1,679	6,360
CRIME SCENE INVESTIGATION	254	2,960	254	2,977
DIGITAL EVIDENCE	60	114	30	90
FIREARMS & TOOLMARKS	564	973	547	1,021
IMPRESSION EVIDENCE	7	23	4	33
LATENT PRINTS	1,110	2,814	942	2,669
TOXICOLOGY	285	291	22	45
TRACE EVIDENCE	38	115	23	92
TOTAL	5,846	20,060	4,810	18,494

One Forensic Scientist was hired in 2022, filling a position within the Digital Evidence section. Additionally, the laboratory celebrated the promotion of one Forensic Scientist Trainee, one Forensic Scientist, one Senior Forensic Scientist, and a Forensic Scientist Technical Leader.

The laboratory makes use of the AFIS (fingerprint), CODIS (DNA), and NIBIN (firearm) forensic databases for providing investigative leads. Samples are added to the databases to search against known individuals and/or other crimes. When a hit is obtained, it can identify suspects or make associations with other crimes. The primary goal is to provide relevant, timely investigative leads to identify suspects, solve crimes, and to prevent additional crimes from being committed. The 234 leads generated in the NIBIN database is a new milestone for the laboratory, shattering the previous record by over 50 leads.

DATABASE	NEW ITEMS	HITS/LEADS
AFIS	1,604	302
CODIS	974	279
NIBIN	634	234



Detention



The Johnson County Sheriff's Office continues to operate two detention facilities, both of which are accredited through the National Commission on Correctional Health Care and provide medical, dental, and mental health care to the inmate population to meet community standards of care. These services are provided through a contracted health care provider and Johnson County Mental Health.

A variety of programs and services are offered to include substance abuse classes, religious programs, anger management, and work programs. A complete and modern law library is available to inmates who wish to use it.

The staff of the Detention Bureau are well-trained professionals who perform their duties with integrity, pride and professionalism. The deputies and civilian staff are committed to our mission statement, "To serve the people of Johnson County with the foundational principles of service, justice and fundamental fairness."

Detention facilities are managed by one Colonel, 1 Major, 4 Captains, 11 Lieutenants, 24 Sergeants, 6 Civilian Supervisors, 74 Civilians and 247 deputies.

There was an increase in the number of bookings into the jail of 1% in 2022 compared to 2021. The average daily population increased by 15.7% to 691 from 597 in 2021. A contributing factor for the increase is much of the detention population consisted of those detained longer due to being charged with serious crimes and awaiting court appearances. The Johnson County Department of Correction's has services available in lieu of incarceration which has given the opportunity for lower-level offenders to return to the community and keep the jail population from being higher.

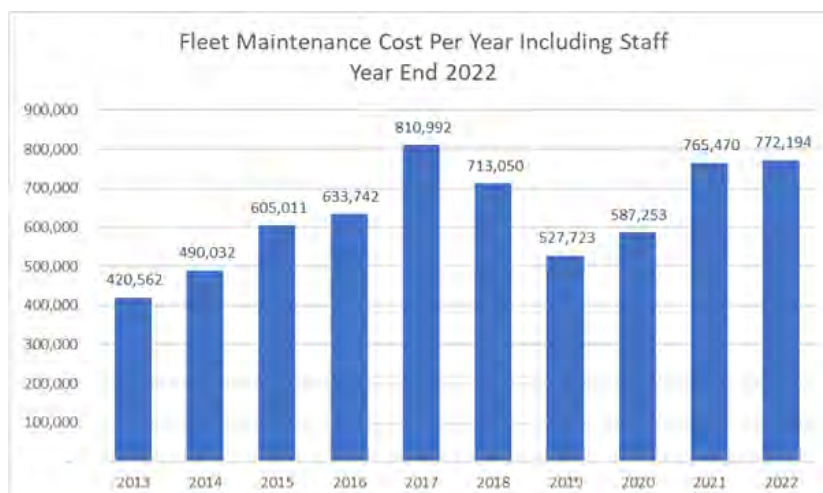
Fiscal Division

The Sheriff's Office expenditures for 2022 totaled \$96,460,779, eighty-one percent (81%) of which supported payroll expenses. Fifty-four percent (54%) of the Sheriff's expenses supported Detention Services.



Fleet Services

During 2017, the Sherriff's Office hired mechanics in an effort to control the escalating cost of outsourcing vehicle repair and maintenance. The result was an immediate savings. Fleet maintenance and repair expense decreased by 35% over the next two years following implementation. In 2022, they were down to just two employees for most of the year but pulled through until a third employee was hired to keep up with the growing demand within the division. In addition to keeping up on maintenance and repairs on existing vehicles, the team of three custom built the interior of the new CSI van to maximize space efficiency, safety features, and practicality.



Investigations Division

The Johnson County Sheriff's Office provides advanced investigative services through its thirteen-person Investigations Division, primarily organized by functional unit, including crimes against property, crimes against persons, financial crimes, cybercrimes and intel/crime analysis.

JCSO detectives investigate crimes reported in the unincorporated areas of the county as well as within De Soto and Edgerton city limits, where the Sheriff's Office is under contract to provide local law enforcement services. Detectives also serve as the primary investigators for the Fairway and Westwood Police Departments. Investigative staff routinely assist and collaborate with investigators from various law enforcement agencies within Johnson County, the larger Kansas City metropolitan area and with state and federal agencies.

In 2022, the Investigations Division investigated 185 cases – about half of which were property crimes and half person's crimes. Included in those cases were 16 Fairway Police Department cases and 17 Westwood Police Department cases.

Officer Involved Critical Incident Investigative Team and Metro Squad investigations

Additionally, during the year detectives and supervisors from the Investigations Division worked two investigations as part of our countywide, inter-agency Officer Involved Critical Incident Investigative Team. Several members of the Investigations Division also worked two Metro Squad homicide investigations during the year. The Kansas City metropolitan area Metro Squad calls together supervisors, detectives and analysts from law enforcement agencies around the region to assist agencies that need additional resources to properly investigate a homicide in the critical days after it occurs.

JCSO Case Info to be Featured on KDOC Cold Case Playing Cards

Playing cards with information about cold cases used in jails and prisons in other states have helped generate leads and even solve cases. Inmates use the playing cards, which can generate conversation about the cases. The Kansas Department of Corrections selected three JCSO cold cases to be included in its deck of cold case playing cards – Tawnya Knight, Candice Fisher and Christina Brandolese.





Northeast Kansas Drug Task Force

The Northeast Kansas Drug Task Force is a multijurisdictional unit comprised of five local law enforcement agencies. Franklin County, Miami County, Shawnee Police Department and the Drug Enforcement Administration each provide one investigator for the Task Force. Johnson County provides 5 investigators, 1 Crime Analyst, 1 Sergeant and 1 Lieutenant. The goal of the Task Force is to provide coordinated joint investigations to reduce the use, sale and manufacture of illegal narcotics in the region.

In 2022, the Task Force opened 156 cases. 40 cases remain open, 89 are closed, 13 are in the judicial process, and 13 are pending lab results.

Fentanyl continues to be a priority concern in Johnson County. In 2022, the task force investigated 12 overdoses, including six that were assisting Merriam and Shawnee Police Departments. Among those overdoses, five resulted in death. All 12 of the overdoses involved Fentanyl or a suspected form of Fentanyl.

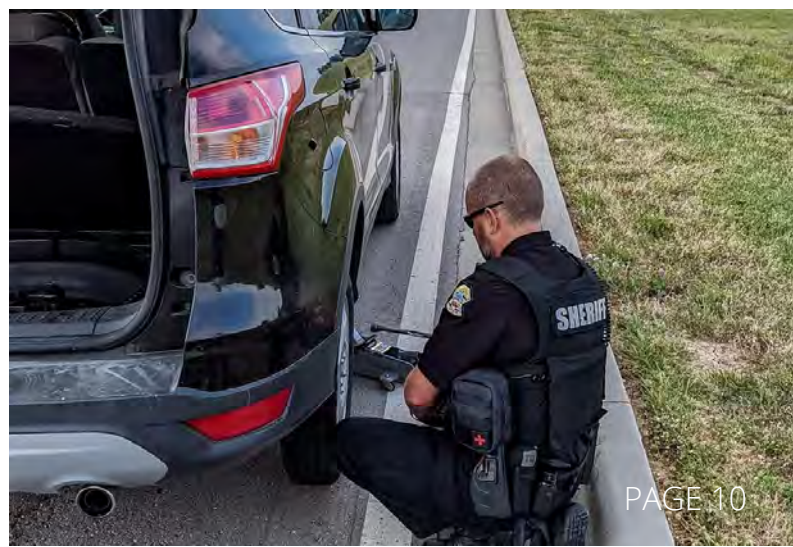
The Task Force along with JCSO's K9 Units assist the United States Postal Inspection Service (USPIS) throughout the year with controlled deliveries of suspicious packages destined for Johnson County. Certain elements of a package including paying cash, the sender's location, and false return addresses flag items as suspicious. The Postal Inspector will pull the package and our K9s will sniff them for possible drug hits. If there is a hit on a package, the Task Force may conduct a Knock-and-Talk at the target address or a search warrant will be obtained to access the package. In 2022, there were 23 suspicious packages flagged for inspection. Currently, there are 5 active judicial cases and 6 additional cases pending lab results.

In February 2022, the Drug Task Force received information that an Olathe man was a source of supply for large quantities of cocaine. Surveillance began as part of a planned purchase of cocaine. Throughout surveillance, a second target of cocaine distribution was identified. An undercover officer arranged for a purchased of 4 kilograms of cocaine at a predetermined location. The original target arrived at the meeting location and was taken into custody. During the arrest, the second target was identified and also agreed to deliver a quantity of cocaine to the same meeting location. The second target arrived and was also taken into custody. A search of the subjects and vehicles revealed 2.44 kilos of cocaine, 2 kilos of methamphetamine and 912 grams of marijuana. In October 2022, the original target pled guilty to one count Possession with Intent to Distribute Cocaine and one count Possession with Intent to Distribute Methamphetamine. He was sentenced to 15 years, 4 months in prison. The second target has an active warrant for Possession with Intent to Distribute Cocaine.

In May 2022, the Task Force received an anonymous tip regarding an Overland Park resident who was involved in the sale and distribution of Percocet and THC in various forms. The tipster also advised the resident had bulk currency at different banks in Johnson County related to the illegal distribution of narcotics. After an extensive seven-month long investigation, multiple search and seizure warrants were executed in December 2022. Investigators recovered nearly 13 pounds of marijuana, 49 pounds of THC edibles, 434 THC Vape cartridges, 174 grams psilocybin mushrooms, and 242 Oxycodone pills. Charges are pending.

Patrol Division

The Patrol Division provides law enforcement and public safety services to the unincorporated areas of Johnson County as well as to the cities of De Soto and Edgerton, which contract municipal law enforcement services with the Sheriff's Office. In addition, this division provides support for all municipal police departments upon request and as needs dictate. The Patrol Division, under the command of a captain, is comprised of five Patrol crews working 24/7, and is staffed by a total of 50 deputies, including supervisors and administrative positions. The Patrol area is divided into six districts, which include De Soto and Edgerton, with a Patrol Unit assigned to each district. Approximately 40% of Johnson County remains unincorporated and Patrol deputies cover an area over 208 square miles. In 2022, the Patrol Division drove 1,900,382 miles. Also encompassed in this Division are School Resource Officers for the De Soto and Spring Hill School Districts, Drug Recognition Experts, Commercial Motor Vehicle Inspectors, the Bicycle Patrol Unit, the Sheriff's Motorcycle Unit, the Accident Investigation Unit, and K-9s.



Personnel Division

At the end of 2022, the Sheriff's Office was staffed with 621 personnel comprised of 443 deputies, along with 178 civilian specialist and support positions. The Personnel Division is responsible for the selection and employment of qualified applicants to serve the citizens of Johnson County. The Personnel Division's mission, along with candidate selection, is ensuring all personnel actions are handled consistently, efficiently, and confidentially.

The assessments for the application process include physical ability testing, polygraph testing, background investigation, extensive interviews, and a hiring board.

In 2022, the Covid-19 pandemic and civil unrest of 2020 continued to impact the ability of law enforcement throughout the United States in recruitment efforts. The Sheriff's Office unceasing progressive recruitment strategies and outside the box thinking led to the successful hiring of employees in comparison with other agencies. Though heavily impacted by these events, the Sheriff's Office has consistently maintained deficits 10% or more below the national average.

The Sheriff's Office does not have a residency requirement. Applicants are being recruited from all counties in the Kansas City Metropolitan Area, as well as states across the nation. Some of these states included Arizona, California, Iowa, Nebraska, Texas and Florida. Outside of filling positions internally, 57 new deputies and 35 new civilians were hired in 2022. Additionally, 13 civilian specialists promoted to deputy positions.

The Sheriff's Office strives for diversity in demographics as well as in background and experience. In our agency, we are currently represented by 6 Asian, 31 African American, 40 Hispanic, 540 White, and 8 Other.

Of these, 185 are female and 440 are male.

The average age of a deputy is 39, with the average length of service being 12 years.

The average age of our civilian support staff is 42, with an average length of service being 8 years.

Of our 625 employees, 23% are members or veterans of the Armed Forces.



Professional Standards Unit

The Professional Standards Unit (PSU), comprised of one investigator and one Command level supervisor, provides the Sheriff's office with a thorough, consistent and fair investigative review of complaints. The Unit is located within the Administration Division of the Sheriff's office and reports directly to the Sheriff. PSU has full authority to conduct investigations without interference from any employee. PSU exists to provide the following services to employees of the Sheriff's Office and the community:

- Protect the public from misconduct of an employee,
- Protect the agency and employees from false accusations and misconduct,
- Provide an early warning system of misconduct, and
- Identify organizational conditions that may contribute to misconduct.

The Professional Standards Unit is tasked with investigating complaints from external sources, such as citizens or an outside agency, as well as internal complaints initiated by supervisors. There were 84 cases/complaints investigated in 2022. This was a 3 case decrease (87) from 2021. There were (100) cases in 2020.

Property Division

The Johnson County Sheriff's Office Property Unit manages a secure facility to store stolen, seized, or collected items for use as evidence in court. All divisions within the Sheriff's Office submit their evidence to this unit for safeguarding and to maintain a chain of custody.

- Items taken in in 2022 = 5,500
- Items released in 2022 = 200
- Items destroyed in 2022 = 5,300

Records Division

The Central Records Division is staffed with thirteen civilian employees. They are responsible for accurately entering, filing, maintaining and retrieving criminal history record information on a current and historical basis. All Records Division employees must follow strict Federal, State and local dissemination guidelines. The spectrum of records includes all related documents and/or videos pertaining to arrests, offenses, investigations, accidents, calls for service, citations, mug shots, background checks, AXON videos, AFIS fingerprint responses, Master Name Indexing, Expungements, and Offender Registration.

Training Division

The Training Division conducts a wide variety of training for our officers, civilians and outside agencies. All deputies are required to complete at least 40 hours of in-service training per year. The Training Division works to make this a reality for our commissioned deputies.

This division offers programs for new hires, re-orientation, continuing education and our Leadership Academy in addition to operating a fully accredited Law Enforcement Academy. In 2022, 37 deputies graduated from the Johnson County Sheriff's Office Law Enforcement Academy. The goal is to train, equip, develop and ultimately prepare our staff to provide a professional service to the citizens of Johnson County. In 2022, staff provided 69,915 hours of internal training to all 620 employees. Training Staff also provided an additional 123 hours of training to external agencies.

The Training Division also dedicates numerous hours and extensive knowledge towards providing various types of awareness training to the members of our community. We offer classes for Kids Bullying Awareness, Women's Self Defense and Elder Abuse Training. The training facility offers space to be utilized by a wide variety of local and federal entities to include the Bureau of Alcohol, Tobacco, Firearms and Explosives, the Olathe Latino Leadership Network, the Johnson County District Attorney's Office and Johnson County Court Services.

Training staff are dedicated individuals who maintain a high level of professionalism to ensure our staff and the members of our community are educated.



Warrants Division

The Johnson County Sheriff's Office Warrants Division is responsible for locating and apprehending subjects with active warrants issued by the Johnson County District Courts along with requests from outside agencies including federal, state and local departments.

In 2022, the Warrants Division had 7,741 active warrants issued through the Johnson County District Courts. Out of these, 4,022 were felony and 2,082 were misdemeanor. Of these warrants, 5,795 were either executed or recalled by the courts.

In 2022, members of the Division made 976 warrant attempts resulting in the apprehension of 111 wanted subjects. Of these arrests, 248 were felony, 116 were misdemeanors and 31 were out-of-county arrests.

The Warrants Division resumes the responsibility of extraditing wanted subjects outside the Sheriff's Office pickup radius. This responsibility has not been managed by our division since 2003 when it was reassigned to our Court Services Division. Contracting these pickups provides a cost-effective benefit to the Sheriff's Office and to Johnson County citizens.

Since 2018, our agency has averaged approximately 260 contracted pickups per year.

